

## A+ Surface Cleaner



Fast, even cleaning for large flat surfaces. Quickly cleans concrete & asphalt, and removes grime and deposits from tennis courts, ramps, and decks. Also great for factory floors, semi-trailer floors & drive-throughs. Cleans better and faster than spray wand alone, with no striping. Use with hot or cold water. Handles water up to 212° F to disinfect bathrooms and kitchens. Safety lock prevents accidental spraying.

- Two spinning nozzles 'floats' cleaner above the ground
- Circular design allows a zero wall clearance
- Stainless steel housing and handle
- Comfort Grip trigger handle
- 3/8" male quick connector plugs into your pressure washer's hose
- Reduces overspray on walls, landscaping, and operator
- Comes with two #2.0, 1/8" nozzles (for machines up to #4.0 nozzles), 25° nozzles rated up to 8 GPM & 4000 PSI
- Requires at least 3 GPM & 2000 PSI



| Part No     | Description                        |
|-------------|------------------------------------|
| 8.753-572.0 | A+SC21 Rotary Surface Cleaner, 21" |
| 8.753-573.0 | A+SC24 Rotary Surface Cleaner, 24" |
| 8.753-597.0 | Swivel for 21" and 24"             |

## Whisper Wash Flat Surface Cleaners

- Saves labor, fuel and water
- Balanced spray bar
- Eliminates overspray and zebra striping
- Quick connection
- Use with conventional pressure washers
- 2,000-4,000 PSI
- Use with cold or hot waterR
- 2500 RPM

### Applications:

- Service stations
- Public facilities
- Driveways
- Pool and patio decks
- Restaurants
- Sidewalks
- Warehouse floors
- Gondolas
- School yards
- Loading docks
- Stadiums
- And lots more!!
- Parking lots
- Marina docks

### The "Maxima 36"

- Portable breakaway handle
- 212°F
- 4-10 GPM
- 2500 RPM
- Dimensions: Cover: 36", Handle: 77"
- Weight 37 lbs
- Uses 1/4" nozzle



| Part No     | Original No. | Description |
|-------------|--------------|-------------|
| 8.710-089.0 | 343636       | Maxima 36   |

## Whisper Wash Flat Surface Cleaners – continued

### Ground Force

- Flip and fold handle
- Choice of two or four nozzles
- Rebuildable swivel
- 212°F
- 4-10 GPM
- Dimensions: 24" x 60" x 9"
- Weight: 29 lbs
- Uses 1/4" nozzle



| Part No     | Old No. | Description  |
|-------------|---------|--------------|
| 8.710-076.0 | 343608  | Ground Force |

### The "Big Guy"

- Powder-coated aluminum housing
- Oversized, self-lubricating twin thrust bearings
- Choice of two or four nozzles
- 10" pneumatic tires, 4" caster
- Crafted with durable stainless-steel and aircraft aluminum
- 212°F
- 4-10 GPM
- Dimensions: 28" x 44" x 12"
- Weight: 48 lbs
- Uses 1/4" nozzle



| Part No     | Old No. | Description                           |
|-------------|---------|---------------------------------------|
| 8.710-074.0 | 343606  | Whisper Wash Big Guy Two Nozzles      |
| 8.710-075.0 | 343607  | Whisper Wash Big Guy Four Nozzles     |
| 8.750-604.0 | 092110  | Swivel, Complete Big Guy and Classic  |
| 8.701-879.0 | 092105  | Repair Kit, Seal, Big Guy and Classic |
| 8.701-874.0 | 092101  | Spraybar, 4 Nozzle, Big Guy           |
| 8.701-876.0 | 092102  | Spraybar, 2 Nozzle, Big Guy           |

### The Classic

- Portable breakaway handle
- ABS Housing
- 2" nylon brush
- 212°F
- 4-10 GPM
- Dimensions: 19" x 77" x 12"
- Weight: 28 lbs
- Uses 1/4" nozzle



| Part No     | Original No. | Description                           |
|-------------|--------------|---------------------------------------|
| 8.710-073.0 | 343605       | Whisper Wash Classic                  |
| 8.750-604.0 | 092110       | Swivel, Complete Big Guy and Classic  |
| 8.701-879.0 | 092105       | Repair Kit, Seal, Big Guy and Classic |

# PRESSURE WASHER ACCESSORIES

## Whisper Wash Flat Surface Cleaners – continued

### The Ultra Clean WW

- ABS Housing
- Four 3" casters
- Powder-coated handle
- Dimensions: 19" x 43" x 9"
- 185°F
- 3-6 GPM
- 2500 RPM
- Weight: 23 lbs
- Uses 1/4" nozzles



| Part No     | Original No. | Description                 |
|-------------|--------------|-----------------------------|
| 8.710-072.0 | 343604       | Whisper Wash Ultra Clean WW |

### The Ultra Clean HC

- ABS Housing
- 2" nylon brush
- Powder-coated handle
- Dimensions: 16" x 43" x 9"
- 185°F
- 3-6 GPM
- Weight: 19 lbs
- Uses 1/4" nozzles



| Part No     | Original No. | Description                 |
|-------------|--------------|-----------------------------|
| 8.710-071.0 | 343603       | Whisper Wash Ultra Clean HC |

### Repair Kits

| Part No     | Original No. | Description                                 |
|-------------|--------------|---|
| 8.701-879.0 | 092105       | Seal Kit; Classic, Big Guy and Ground Force |
| 8.701-882.0 | 092108       | Seal Kit; Ultra Clean                       |
| 8.701-883.0 | 092109       | Complete Swivel Kit; Ultra Clean            |
| 8.750-604.0 | 092110       | Complete Swivel Kit; New Style              |
|             |              | Classic, Big Guy and Ground Force           |
| 8.707-653.0 | 251119       | 2.5 x 25° 1/4" Nozzle Fits All Models       |

## Mosmatic Gun Swivel



Mounts to your high-pressure gun or lance for an easy turning, low-maintenance gun swivel

- 4000 PSI
- 250°F
- 30 RPM



| Part No     | Original No. | Description                    |
|-------------|--------------|--------------------------------|
| 8.712-467.0 | 421057       | 1/4" MPT / 1/4" FPT Gun Swivel |
| 8.712-466.0 | 421056       | 3/8" MPT / 3/8" FPT Gun Swivel |

## Mosmatic Surface Cleaners and Duct Cleaner



### Turbo Surface Cleaner

Delivers high-pressure performance with low Maintenance for any hot or cold pressure washer. Completely stainless-steel design makes this the toughest surface cleaner available in the pressure-cleaning market.

Swiss-engineered with high RPM swivel features reinforced self-lubricated stainless-steel ball bearings and dual spring-based carbide seal bushings for long-lasting operation under tough conditions.

- 4000 PSI
- 250°F
- 6.5 lbs



Ideal for pressure washer contractor to clean walls, ceilings, public facilities, tile floors and other hard-to-reach areas. Uses 1/8" meg 1503 nozzles.

- 4000 PSI
- 250°F
- 2 lbs
- Inlet Ports 3/8" NPTF

### Duct Cleaner

Designed as an accessory for use with high-pressure pumps or pressure washers. Cleans ducts, chutes, vents, restaurant exhausts, tanks, etc.

- 4000 PSI
- 250°F
- 9 lbs
- 12" stainless-steel

Self-rotating and feeding stainless-steel triple bearing system for constant easy turning. Nozzle holders are 1/8" NPTF. Nozzles are sold separately.



### 12" Surface Cleaner

Designed for effortless cleaning of small areas, including walls and angled surfaces. High RPM swivel with integrated toggle joint and adjustable tension system.



| Part No     | Original No. | Description                     | PSI  |
|-------------|--------------|---------------------------------|------|
| 8.712-284.0 | 411171A      | Turbo Cleaner – 8"              | 4000 |
| 8.712-285.0 | 411172       | Toggle Joint KGK                | 4000 |
| 8.712-280.0 | 411156       | Duct Cleaner TXR-2s, Adjustable | 4000 |
| 8.712-279.0 | 411155       | Duct Cleaner TXR-2s, Fixed      | 4000 |
| 8.749-911.0 |              | Surface Cleaner – 12"           | 4000 |

## Surface Cleaner Nozzle Recommendation

Determine the correct nozzle size for the pressure washer being used with the surface cleaner. Never use a smaller size nozzle as this will prematurely wear out the unloader valve on the pressure washer. The Legacy Undercarriage Cleaner and A+ Surface Cleaners come supplied with nozzles, for other surface cleaners, nozzles must be purchased separately. Threaded nozzles are listed on pages 80-81 of the catalog, to determine your pressure washer nozzle size refer to chart on page 78. Contact your RSM on other sizes or surface cleaner spray bars that use 4 nozzles or other sizes.

| Pressure Washer Nozzle Size |        | 15° x 1/4" MPT | 25° x 1/4" MPT |
|-----------------------------|--------|----------------|----------------|
| # 3.5 and # 4.0             | 2 each | #2.0           | #2.0           |
| #4.5 and # 5.0              | 2 each | #2.5           | #2.5           |
| # 5.5 and # 6.0             | 2 each | #3.0           | #3.0           |
| # 6.5 and # 7.0             | 2 each | #3.5           | #3.5           |
| # 7.5 and # 8.0             | 2 each | #4.0           | #4.0           |

## Mosmatic Roof Cleaner

Industrial-quality tool specially designed for efficient, high-pressure roof cleaning while keeping the operator in a safe area.

- 21"
- 4000 PSI
- 250°F
- 31.9 lbs.
- Pressure gauge
- Ball valve
- Adjustable wheels (height and width)
- Safety eye connection for rope or cable
- Two 1/8" nozzles sold separately



| Part No     | Description           |
|-------------|-----------------------|
| 8.749-910.0 | Mosmatic Roof Cleaner |

## "Cyclone" Rotary Flat Surface Cleaner



- 4 - 6 GPM
- 2000 - 4000 PSI
- 200°F
- Polyethylene housing
- Collapsible handle
- Pneumatic tires
- 20" diameter surface cleaning
- Up to 5 gpm
- Weight: 35 lbs

| Part No.    | Original No. | Description                              |
|-------------|--------------|--|
| 8.710-073.0 |              | Classic Rotary Surface Cleaners (yellow) |
| 8.710-074.0 | 630853       | "Big Guy" Rotary Surface Cleaners        |
| 8.903-608.0 | 30-587       | "Cyclone" Surface Cleaners               |

## Undercarriage Cleaner

**Legacy**

- No more crawling under a vehicle
- Simply connect to your hot or cold water pressure washer
- Easy to handle and maneuver
- Removes road grime, fuel and oil contaminants
- Removes snow sludge and ice
- Provides a clean, working environment for technicians
- Stainless-steel rotating assembly built to withstand pressures up to 4000 PSI and 250°F
- 5.5" required clearance
- Four Nozzles: (2) 0° #2.0, (2) 25° #2.0



| Part No     | Description           |
|-------------|-----------------------|
| 8.749-303.0 | Undercarriage Cleaner |

## Oil-Fired Hot Box

**Legacy**

Add hot water cleaning economically! Portable water heater add-on for existing cold water pressure washers. Quick Connect to cold water washer, supply fuel and power to Euro-Heat for hot water cleaning applications — USE ONLY WHEN NEEDED and keep the convenience of the portable cold water washer.

- 3000 PSI
- Quick hookup — 3/8" QC inlet / outlet
- Easy service access to burner parts
- Efficient vertical combustion configuration
- Diesel, kerosene, #1 heating oil
- 10" easy-roll tubed pneumatic wheels
- 5-gallon plastic fuel tank
- Compact size — 37" W x 27" L x 39" H
- 36' Ground Fault Interrupter plug
- Thermostat temperature control

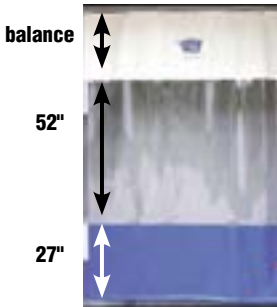
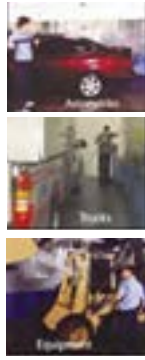


| Part No     | Original No. | Description             |
|-------------|--------------|-------------------------|
| 1.103-910.0 | HR-5030D     | 5 GPM / 3000 PSI – 120V |

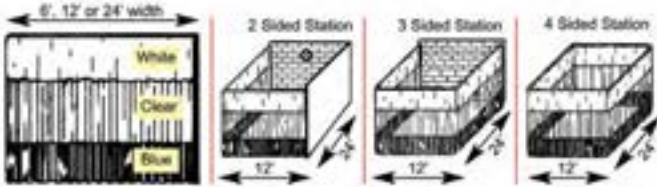
# PRESSURE WASHER ACCESSORIES

## Goff's Curtain Walls

Build a Power Wash Cell to meet your needs. Goff's Curtain Walls™ increase useable floor space while controlling overspray, contaminants, climate, and noise levels. Curtain Walls™ glide easily on steel track and dual-wheeled rollerhooks. Made from a combination of 14-oz., heavy-duty, reinforced vinyl and double-polished 20-mil clear PVC material. Reinforced hems and chain-weighted lower hems add durability. Hook and loop fasteners on side hems attach to adjacent panels. Meet NFPA-701 requirements for flame retardancy. Curtains are also rot and mildew resistant. Standard model has a white vinyl top, clear PVC center, and blue vinyl bottom.



- #2 Brass tooth grommets on 1' centers
- 14 oz. reinforced vinyl white top section
- All seams double-locked stitched
- Hook and Loop Fasteners allow adjacent panels to be easily attached to one another
- 20 mil. double-polished clear window
- All sections joined together using mildew/rot resistant thread
- 14 oz. reinforced colored vinyl section (your choice of over 12 different colors)
- Chain-weighted lower hem



| Part No     | Original No. | Description          | PSI  |
|-------------|--------------|----------------------|------|
| Single      |              |                      |      |
| 9.841-694.0 | 681133       | 6' width x 12' high  | 1500 |
| 8.717-007.0 | 681083       | 12' width x 8' high  | 1500 |
| 8.717-008.0 | 681084       | 12' width x 9' high  | 1500 |
| 8.717-009.0 | 681086       | 24' width x 10' high | 1500 |
| 8.739-486.0 | 681087       | 24' width x 12' high | 1500 |

| Part No     | Original No. | Description        | PSI  |
|-------------|--------------|--------------------|------|
| Station     |              |                    |      |
| 9.841-695.0 | 681145       | 4-sided x 12' high | 1500 |

Includes hardware, track and rollers (white top, clear center and blue bottom panel)  
All 2-, 3- and 4-sided stations are 12' wide x 24' long (see diagram above).

Other sizes available — call for details

## Sandblast Kit – Carbide Nozzle Industrial Grade



A Venturi orifice creates a uniform blast pattern, doubles sand velocity and produces up to 45% more work with 20% less sand.

- 5500 PSI max working pressure
- 10 GPM max flow
- 200°F
- 10 lbs.
- Nozzle tips sold separately



| Part No     | Original No. | Description            |
|-------------|--------------|------------------------|
| 8.701-485.0 | 084079       | Sand Blast Kit DWSDBTK |

## Self Serve Underbody Wand Assembly



Ideal for rinsing the undercarriage of cars and trucks. Connect directly to a pressure washer gun or lance. Lightweight, the underbody wand assembly rolls easily giving the operator a long reach.

- Ergonomic lance to reduce bending
- Stainless Steel
- Uses 3 threaded MEG Nozzles
- 3000 PSI
- 300° F
- Inlet 1/4"
- Non-weeping



| Part No     | Description                        |
|-------------|------------------------------------|
| 8.755-257.0 | Self Serve Underbody Wand Assembly |

## Sandblast Nozzles Tips

- Replacement tips for Sandblaster Kit (part no. 8.701-485.0 – Original no. 084079)
- Use 1/4" meg 5' spray tip



| Part No     | Original No. | Description  |
|-------------|--------------|--------------|
| 8.707-668.0 | 251159       | 4.0 x 5° Tip |
| 8.707-685.0 | 251198       | 5.0 x 5° Tip |
| 8.707-696.0 | 251221       | 5.5 x 5° Tip |
| 8.707-701.0 | 251237       | 6.0 x 5° Tip |
| 8.707-709.0 | 251256       | 6.5 x 5° Tip |

## Professional Sandblast Head

- Long-wearing Carbide sand nozzle
- 1/4" FPT water inlet
- 200°F
- 10 GPM
- 3500 PSI
- Sand probe weight 6 oz, length 16"
- Head weight: 13 oz



| Nozzle Size | Part No     | Original No. |
|-------------|-------------|--------------|
| 3.5         | 8.711-242.0 | 391631       |
| 4.0         | 8.711-243.0 | 391632       |
| 4.5         | 8.711-244.0 | 391633       |
| 5.0         | 8.904-403.0 | 391634       |
| 5.5         | 8.711-245.0 | 391635       |
| 6.0         | 8.904-404.0 | 391636       |

| Part No     | Original No. | Description                     |
|-------------|--------------|---------------------------------|
| 8.711-247.0 | 391640       | Sand Probe                      |
| 8.901-264.0 | 121041       | 1/2" ID Polybraided Tubing, 25' |

**Sewer/Tube Cleaning Nozzles**



The reverse jets on the fixed and rotary nozzles pull the hose through the tube or sewer line and blast debris from line or tube walls.

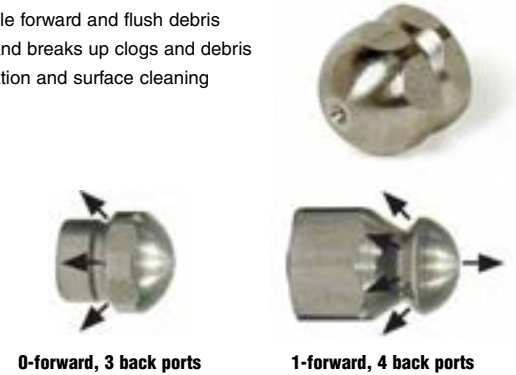
- 4200 PSI
- Physically small for cornering ability
- Corrosion-resistant stainless-steel construction
- Orifice size indicated on non-rotating styles

- Backward ports drive the nozzle forward and flush debris
- Forward ports blast into pipe and breaks up clogs and debris
- Rotating style adds extra agitation and surface cleaning

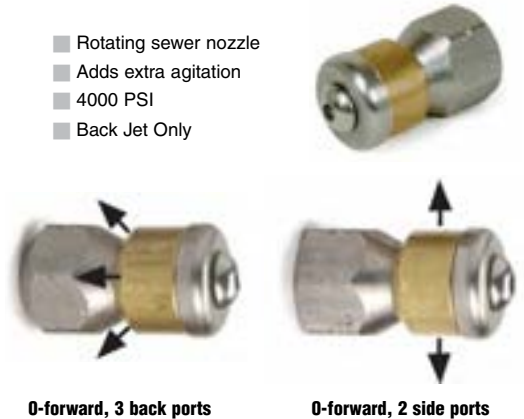
| Part No                           | Old No | Nozzle | Orifice Size | O.D.  | Ports             |
|-----------------------------------|--------|--------|--------------|-------|-------------------|
| <b>Non-Rotating Sewer Nozzles</b> |        |        |              |       |                   |
| 8.710-875.0                       | 373024 | 1/8"   | 4.5          | .580" | 0-forward, 3 back |
| 8.710-874.0                       | 373023 | 1/8"   | 5.5          | .580" | 1-forward, 3 back |
| 8.710-878.0                       | 373027 | 1/4"   | 4.5          | .730" | 1-forward, 3 back |
| 8.710-876.0                       | 373025 | 1/4"   | 5.5          | .730" | 1-forward, 3 back |
| 8.710-877.0                       | 373026 | 1/4"   | 6.0          | .730" | 1-forward, 4 back |
| 8.710-880.0                       | 373029 | 1/4"   | 7.5          | .730" | 1-forward, 4 back |
| 8.710-879.0                       | 373028 | 1/4"   | 8.0          | .730" | 1-forward, 3 back |
| 8.710-881.0                       | 373032 | 1/4"   | 12           | .730" | 1-forward, 3 back |
| 8.710-885.0                       | 373038 | 3/8"   | 4.0          | .920" | 1-forward, 3 back |
| 8.710-884.0                       | 373037 | 3/8"   | 5.5          | .920" | 1-forward, 3 back |
| 8.710-886.0                       | 373039 | 3/8"   | 8.5          | .920" | 1-forward, 4 back |
| 8.710-883.0                       | 373036 | 3/8"   | 12           | .920" | 1-forward, 4 back |
| 8.710-882.0                       | 373035 | 3/8"   | 14           | .920" | 1-forward, 4 back |

| Part No                       | Old No | Rotating Nozzle Size | Ports                 |
|-------------------------------|--------|----------------------|-----------------------|
| <b>Rotating Sewer Nozzles</b> |        |                      |                       |
| 8.710-899.0                   | 373062 | 1/8"                 | 5.5 0-forward, 3 back |
| 8.710-898.0                   | 373061 | 1/4"                 | 5.5 0-forward, 3 back |
| 8.710-900.0                   | 373064 | 1/4"                 | 8.0 0-forward, 3 back |
| 8.710-887.0                   | 373040 | 1/4" Duct Clnr*      | 5.5 0-forward, 2 side |

\*Duct Cleaner jet to sides instead of reverse



- Rotating sewer nozzle
- Adds extra agitation
- 4000 PSI
- Back Jet Only



**Stainless-Steel Sewer Nozzles**

- 4100 PSI
- Corrosion-resistant stainless-steel
- One forward orifice
- Three rear orifices



| Part No     | Original No. | FPT  | Size |
|-------------|--------------|------|------|
| 8.710-905.0 | 373075       | 1/8" | 5.0  |
| 8.710-906.0 | 373076       | 1/8" | 5.5  |
| 8.710-907.0 | 373077       | 1/8" | 6.0  |
| 8.710-908.0 | 373078       | 1/4" | 6.5  |
| 8.710-909.0 | 373079       | 1/4" | 7.0  |
| 8.710-910.0 | 373080       | 1/4" | 9.5  |

**Water Broom 16"**



- 4000 PSI
- Fits any 1/4" wand
- Requires (4) 1/4" nozzles and wand

| Part No     | Original No. | Description     |
|-------------|--------------|-----------------|
| 8.710-082.0 | 343615       | Water Broom 16" |

**Mat Clamp**

- Hang floor mats, scrubber pads, rugs, rags, coveralls, etc., for close-up pressure washing and drying



| Part No.    | Old No | Description            |
|-------------|--------|------------------------|
| 8.709-071.0 | 823885 | Aluminum Spring Action |

# PRESSURE WASHER ACCESSORIES

## Dual-Chemical Systems

- New deep-ribbed yellow casing, stays flexible even in cold temperature
- Hose assembly complete with gun and amphenol connectors pre-wired
- Fully-compatible with Power Blaster, Two-Step, Chemex and most other cold water dual-chemical systems



| Part No                  | Original No. | Description                   |
|--------------------------|--------------|-------------------------------|
| Complete Hose Assembly   |              |                               |
| 8.709-044.0              | 285116       | 80' R2 Electric (5 wire)      |
| 8.709-045.0              | 285120       | 100' R2 Electric (5 wire)     |
| Lance Attachment Parts   |              |                               |
| 8.709-049.0              | 285136       | Female Receiver               |
| 8.709-050.0              | 285137       | Male Lance Swivel             |
| 8.709-051.0              | 285138       | Retainer Nut                  |
| Complete Remote Gun Unit |              |                               |
| 8.709-046.0              | 285125       | Gun, Electric                 |
| Remote Gun / Hose Parts  |              |                               |
| 8.709-048.0              | 285135       | Gun Housing                   |
| 8.709-053.0              | 285139       | Switch P/B                    |
| 8.709-054.0              | 285140       | Switch, Chemical              |
| 8.709-056.0              | 285142       | Switch Plate                  |
| 8.903-083.0              | 285144       | O-ring, Nipple (Two req'd)    |
| 8.903-084.0              | 285145       | O-ring, Nipple (Bags of 50)   |
| 8.709-060.0              | 285175       | Swivel Adapter                |
| 8.709-061.0              | 285177       | Cord Grip                     |
| 8.709-063.0              | 285181       | Oetiker clamp                 |
| 8.709-064.0              | 285187       | Switch - Push Button Trigger  |
| 8.709-065.0              | 285189       | Toggle, DPDT (Trig) On/Off/On |

## Sewer Hose

### SUPER FLEXIBLE SEWER LINE HOSE

Hose and couplings have small outside diameter, allowing hose and nozzles to fit through sewer line. Sewer line has Super Tough poly-ether cover over ultra-flexible nylon tube. (1/8" sewer nozzle and hose will operate through many 1-1/2" lines.)



- 160°F
- Nylon tube, poly-ether cover

(Nozzles not included.)

| Part No  | Original No. | Description |
|--|--------------|-------------|
| 1/8" hose - 4800 PSI, 1/4" inlet / 1/8" outlet |              |             |
| 8.705-601.0                                    | 150960       | 1/8" x 25'  |
| 8.705-602.0                                    | 150963       | 1/8" x 50'  |
| 8.705-603.0                                    | 150964       | 1/8" x 100' |
| 1/4" Hose - 2600 PSI, 1/4" inlet / 1/4" outlet |              |             |
| 8.705-607.0                                    | 150968       | 1/4" x 50'  |
| 8.705-608.0                                    | 150970       | 1/4" x 100' |
| 1/4" Hose - 4400 PSI, 1/4" inlet / 1/4" outlet |              |             |
| 8.705-610.0                                    | 150972       | 1/4" x 50'  |
| 8.705-611.0                                    | 150973       | 1/4" x 100' |
| 8.705-613.0                                    | 150975       | 1/4" x 200' |

## Foot-Controlled Pressure Valve

Operators of sewer and tube cleaning equipment need both hands free to feed or retract the hose in the sewer line. Foot-operated valve allows hands-free control.



- Inlet 3/8" - outlet 1/4"
- Brass body - stainless-steel valve
- Steel cover for safety
- Up to 12 GPM
- Up to 5000 PSI

| Part No     | Original No. | Description                            | PSI  |
|-------------|--------------|--|------|
| 8.710-134.0 | 344200       | Sewer Cleaner Foot Valve               | 3000 |
| 8.709-972.0 | 342024*      | Foot Valve w/ ST-2305                  | 5000 |
| 8.701-657.0 | 089006       | Repair Kit - Foot valve                |      |
| 8.701-673.0 | 089850       | Repair Kit ST-2305                     |      |
| 8.711-526.0 | 4-0193       | Kit, 25' Hose, #4.5 Nozzle, Foot Valve |      |

\*Heavy gauge steel construction for durability and stability

## ST-36 Pit Boss Sludge Sucker

Sludge Sucker uses a high-pressure water stream (1000-3000 PSI) to suck the sludge off the bottom of pits or tanks and eject it through a 1-1/2" (15' long) hose to a disposal tank.

The base unit attaches to the end of a pressure washer lance with a quick coupler for extension to the bottom of the pit. Uses a 0° tip for suction / power ejection.



- Uses standard 1/4" MPT nozzle
- Easy to change for different plumbing system flows and pressures

| Part No     | Original No. | Description                           |
|-------------|--------------|---------------------------------------|
| 8.711-112.0 | 376137       | ST-35 Pit Boss, 5.5 Nozzle / 15' Hose |
| 8.711-110.0 | 376126       | (Base unit only)                      |

\*w/o hose, nozzle or quick coupler (3/8" inlet port)

## Drum Pumps

Siphon liquids from higher to lower levels. Simply pump the bellows a few times to prime and start flow. Loosen air lock to stop.

- Drum pump fits 15-, 30- and 55-gallon drums
- Fit 2" bung opening
- Excellent for alkaline and acidic chemicals, diesel fuel, and oils
- Not for use with solvents!



| Part No     | Original No. | Description               |
|-------------|--------------|---------------------------|
| 8.704-698.0 | 118429       | Red Hex Head (Heavy-duty) |
| 8.704-696.0 | 118423       | Red Head (Standard duty)  |
| 8.704-694.0 | 118420       | Pail Pump (5 Gallon)      |

**Fiberglass “Super Handles”**



- Tough, durable, lightweight
- No cracking, splintering
- No kinks, dents
- Safer around electrical hazards
- Easy-twist cam lock extension
- Super heavy-duty aluminum alloy threads
- Standard 3/4" Acme thread fits: brooms, brushes, utility tools
- Optional reduction adapter for 3/4" to Acme standard

| Part No                        | Original No. | Description          |
|--------------------------------|--------------|----------------------|
| <b>Super Handles</b>           |              |                      |
| 8.709-306.0                    | 306864       | 48" Length (4 ft.)   |
| 8.709-307.0                    | 306865       | 60" Length (5 ft.)   |
| 8.709-308.0                    | 306866       | 72" Length (6 ft.)   |
| <b>Super-Extension Handles</b> |              |                      |
| 8.709-309.0                    | 306868       | 4 ft. to 8 ft. Ext.  |
| 8.709-310.0                    | 306869       | 6 ft. to 12 ft. Ext. |
| 8.709-311.0                    | 306870       | 8 ft. to 16 ft. Ext. |
| 8.700-308.0                    | 075271       | Threaded Adapter     |

**Drum / Tank Pump – Crank Type**

Chemical-resistant, lightweight pump, ideal for dispensing chemicals, pesticides and oils. Polypropylene for most alkalies, dilute acids, pesticides, and most oils and solvents. Ryton for extremely aggressive acids, aromatic and aliphatic hydrocarbons.

- 11 oz per revolution
- 6 GPM @ 70 RPM
- Viton seals
- Polypropylene gasket
- Outlet 3/4" barb two-piece
- 2" bung adapter
- 47" suction tube
- Weight: 2.6 lbs



| Part No     | Original No. | Description                   |
|-------------|--------------|-------------------------------|
| 8.704-700.0 | 118435       | Polypropylene Pump (Standard) |
| 8.704-701.0 | 118438       | Ryton Pump (Deluxe)           |
| 8.700-526.0 | 076975       | Replacement Handles           |

**Drum Tool Accessories**

The indispensable tools.

| Part No                       | Orig. No. | Description                              |
|-------------------------------|-----------|--|
| 8.712-534.0                   | 449339    | Drum Plug Wrench                         |
| 8.704-689.0                   | 118400    | Lid-Off                                  |
| 8.704-691.0                   | 118404    | Funnel, 7" x 10"                         |
| 8.704-692.0                   | 118407    | 3/4" Faucet                              |
| 8.704-693.0                   | 118408    | 2" Faucet                                |
| <b>Load Cincher Tie Downs</b> |           |  |
| 8.707-473.0                   | 249938    | 7/8" x 5-1/2' (Non-Ratchet) "Quick Lock" |
| 8.707-474.0                   | 249939    | 1" x 15' (Ratchet) "Tight Lock"          |

**Brushes**



Rotating Brush – Natural Bristle (soft) used for painted surfaces. Nylon Bristle (stiff) used for removing scum and grime on fiberglass boats, etc.

- Internal nozzle = size 20
- 8 GPM

| Part No                    | Original No. | Description |
|----------------------------|--------------|-------------|
| <b>Brush Unit Complete</b> |              |             |
| 8.709-312.0                | 306925       | Natural     |
| 8.709-314.0                | 306935       | Nylon       |
| <b>Replacement Brushes</b> |              |             |
| 8.709-313.0                | 306927       | Natural     |
| 8.709-316.0                | 306937       | Nylon       |



**Truck Wash Brush**

- Flag-tipped
- Soft bristle
- ACME thread for Super Handles, or broom handles



| Part No     | Original No. | Description                    |
|-------------|--------------|--------------------------------|
| 8.709-298.0 | 306800       | 2-1/2" Bristle w/ Bumper x 10" |
| 8.709-303.0 | 306818       | 2-1/2" Bristle x 18"           |
| 8.709-304.0 | 306824       | 2-1/2" Bristle x 24"           |
| 8.709-305.0 | 306860       | 60" Flow Thru Lance*           |

\*with Acme Thread and Garden Hose Attachment

**Deck Scrub Brush – Over / Under**

- Not a Flow Thru
- Excellent chemical resistance
- Use with threaded handle
- Trimmed for cleaning hard-to-reach areas
- Stiff polypropylene bristle for aggressive cleaning
- Unique heavy-duty scrub brush with multi-level / angle.
- 10" molded polypropylene foam block does not warp or absorb water



| Part No     | Original No. | Description      |
|-------------|--------------|------------------|
| 8.709-302.0 | 306812       | Deck Scrub Brush |

**Tractor Brush – Soft for gentle cleaning of fine finishes.**

| Part No     | Original No. | Description         |
|-------------|--------------|---------------------|
| 8.709-298.0 | 306802       | Flag Tip Window 10" |



# PRESSURE WASHER ACCESSORIES

## Compact Foamer

**Legacy**

Generates a high-density clinging foam for extended dwell-time to increase chemical action.

- Stainless-steel, aluminum and brass
- 5" long, 1" diameter
- 4 and 6.5 nozzle included
- 1 to 5 GPM
- 195°F
- 2500 PSI



| Part No     | Original No. | Description  |
|-------------|--------------|--------------|
| 8.903-998.0 | 344022V      | 1/8" F Inlet |
| 8.903-999.0 | 344023V      | 1/4" F Inlet |

NOTE: Most cleaning chemicals perform best when applied at 120°-150°F and can be applied as a foam by adding a foaming agent. See your chemical supplier to obtain the correct product.

## Foam Cannon

The ideal Foam Generator Application Accessory meters the foaming chemical for customized foam type and applies the foam to match the application.

- Brass meter valve
- 3000 PSI max pressure
- High-impact, glass-filled body
- 4.8 GPM max flow
- Stainless-Steel Foam Turbulator
- 176°F max temperature
- 1/4" FPT lance connect
- Stainless-steel 1.5mm orifice (#5.5 nozzle equivalent)



| Part No     | Original No. | Description                     |
|-------------|--------------|---------------------------------|
| 8.710-125.0 | 344030       | Foam Cannon / Injector          |
| 8.710-126.0 | 344032       | Foam Cannon / Injector / Bottle |
| 8.704-222.0 | 113011       | Replacement Turbulator Screen   |

## Air-Power Sprayers

- Pump-up style
- Heavy-duty plastic sprayers for chemical applications
- Both models have Adj. Nozzle — from mist to solid stream
- 2-gallon unit has 2' hose and hand trigger
- Excellent chemical resistance
- Locking hand pump handle serves as carrying handle



| Part No     | Original No. | Description         |
|-------------|--------------|---------------------|
| 8.704-703.0 | 118842       | Thumb Button 3 Pint |
| 8.704-702.0 | 118835       | 2-Gallon Sprayer    |

## Foam Jet Kit

**AP**

Long-distance foam applicator. Shoots OVER 20 FEET of dense foam. Suction at 30 feet of height. Variable spray pattern.

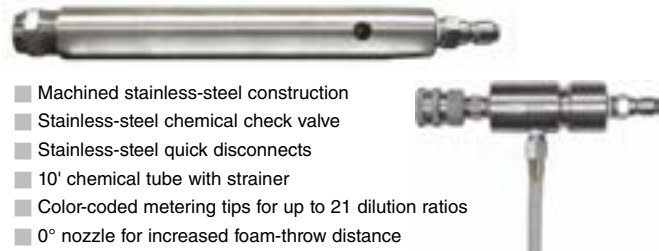
- 5000 PSI
- 5.6 GPM
- 140°F
- 33' Tube
- 14" inlet



| Part No      | Description   |
|--------------|---|
| 8.750-296.0* | Kit, Foam Jet, 5000 PSI, 5.6 GPM                      |
| 8.750-429.0  | Kit, Repair, Foam Jet Orings / Stainless-Steel Filter |
| 8.750-430.0  | Kit, Repair, Foam Jet, Hose / Valve / Filter          |

\* Includes tubing and fittings as shown

## Lafferty Airless Foam Kit



- Machined stainless-steel construction
- Stainless-steel chemical check valve
- Stainless-steel quick disconnects
- 10' chemical tube with strainer
- Color-coded metering tips for up to 21 dilution ratios
- 0° nozzle for increased foam-throw distance

| Part No                | Flow Rate@2000 PSI | @ 137.9 bar |
|------------------------|--------------------|-------------|
| 8.749-908.0 (Model 10) | 4.0 GPM            | 15.1 LPM    |
| 8.749-909.0 (Model 20) | 6.0 GPM            | 22.7 LPM    |

## Adjustable Foamer with Tank

Control the foam spray angle with the variable fan nozzle.

- PSI: 2600
- GPM: 5.3
- 140°F
- Horizontal variable fan nozzle
- Foam control adjustment knob



| Part No     | Description               |
|-------------|---------------------------|
| 8.710-124.0 | Adjustable Foamer w/ Tank |

## Teflon® Thread Sealing Tape

- Big 1/2" x 520" roll
- Mil — spec #T27730



| Part No     | Original No. | Description         |
|-------------|--------------|---------------------|
| 8.704-705.0 | 118905       | Thread Sealing Tape |



## Thread Lock Products

- Direct replacement for LocTite® and Fel-Pro™ products
- Excellent lubricant; prevents corrosion and fretting
- ND™ anaerobic adhesives are liquid materials that cure to a solid, chemical-resistant plastic state when air is not present

| Part No     | Old No | Description                    | LocTite® Equiv | Bottle Size |
|-------------|--------|--------------------------------|----------------|-------------|
| 8.704-644.0 | 112350 | Nut Grade™                     | 242            | 10 ml       |
| 8.704-645.0 | 112352 | Nut Grade™                     | 242            | 50 ml       |
| 8.704-646.0 | 112354 | Nut Grade™                     | 242            | 250 ml      |
| 8.704-648.0 | 112360 | Stud Grade™                    | 271            | 10 ml       |
| 8.704-649.0 | 112362 | Stud Grade™                    | 271            | 50 ml       |
| 8.704-650.0 | 112367 | Penetrating Adhesive (Sealant) | 290            | 10 ml       |

**Nut Grade™ and Stud Grade™ are trademarks of the Oakland Corp. LocTite® is a registered trademark of the LocTite Corp.**



## Gloves – Industrial Duty

Industrial-grade gloves for most industry-needs — chemical / heat / abrasion / laceration protection.

8.704-669.0

- Black, 14" PVC glove lined with cotton for the most demanding chemical handling. Resists alkalines, acids — even works well as a sandblasting glove.



8.704-668.0

- Gray – Split Cowhide work gloves, 2-1/2" gauntlet unlined — great general purpose work glove.

| Part No     | Original No. | Description   |
|-------------|--------------|---------------|
| 8.704-668.0 | 116105       | Gray Roughout |
| 8.704-669.0 | 116114       | Black PVC     |

## Rain Suit – 2-Piece

- Heavy-duty, 2-ply laminated vinyl (25 mil)
- Jacket and pants
- Bright safety yellow
- Vented for air flow



| Part No     | Original No. | Description |
|-------------|--------------|-------------|
| 8.704-666.0 | 116100       | Large       |
| 8.704-667.0 | 116101       | Extra Large |

## Amazing Pocket Reference – Third Edition

A ton of information in a 5 oz book!

- Air and gases, Chemistry, Math
- Plumbing and pipe, Electrical, Automotive
- Electrical, Automotive
- Physical constants
- 3350 conversion factors
- Over 20 other subject areas



| Part No     | Original No. | Description      |
|-------------|--------------|------------------|
| 8.712-505.0 | 449015       | Pocket Reference |

## Shipping Tape and Dispenser

Big 2" x 110 yard rolls of clear. Biaxially-oriented polypropylene for secure packages.

- Heavy-duty tape dispenser with serrated blade



| Part No     | Original No. | Description     |
|-------------|--------------|-----------------|
| 8.704-707.0 | 118916       | Dispenser Boxed |
| 8.901-249.0 | 118918       | 110 Yard Roll   |

## Profit From Power Washing

Geared specifically to determining the profitability, feasibility, and marketability of owning a pressure washing business. It covers the methodology so crucial in both starting and operating a pressure washing service. Topics covered include:

- Marketable services
- Equipment selection
- Equipment use
- Personal safety
- Target markets
- Customer relations
- Estimating
- Advertising
- Chemical selection and use
- Important legal issues
- Much more...



| Part No     | Description               |
|-------------|---------------------------|
| 8.750-507.0 | Profit From Power Washing |

## Yamada Pumps



Air-powered double diaphragm pump, "Reliable Performance Since 1905". The answer to difficult product transfer problems. Air-drive allows freedom from electrical hazards or explosion-proof motor requirements. Choose from various wetted-parts materials to customize the pump to the chemical being pumped. Yamada's smaller pumps are often used for pumping car wash chemical for 'low-pressure' functions. The 1/2" pump is also ideal for rapidly pumping oil, soap, etc., from 55 gallon barrels. Larger pumps are used for high-volume product transfer. Since all pumps are designed without rotating parts, they can also handle abrasive liquids such as ceramic slip, sand slurry, or enamel frit without damage. Have a unique challenge? Call us for help!

- 100 PSI / 180°F
- Environmentally-friendly non-lube air valve
- Automatic start/stop
- Non-stalling air valve — positive switching every stroke and won't ice up
- Outside accessible air valve — easy inspection and maintenance
- Bolted flange connections — leak-free and easy maintenance
- Built-in abrasion and chemical-resistance
- Virgin diaphragm materials last twice as long as other pumps
- 1/4" model deliver 3.4 GPM with 20-100 PSI drive air
- 1/2" models deliver 15 GPM with 20-100 PSI drive air
- 3/4" models deliver 19.5 to 27.3 GPM with 20-100 PSI drive air
- 1" models deliver 35.7 to 48.3 GPM with 20-100 PSI drive air
- Infinitely variable flow control regulated by opening or closing discharge side valve and/or fluctuating air supply



8.702-180.0



8.702-183.0

| Part No     | Old No | Intake and Discharge | Air Inlet w/ball valve | Air Exhaust w/B-I muffled | Pump Body | Diaphragm Material      | Max Flow @ 100 PSI | Max Solid |
|-------------|--------|----------------------|------------------------|---------------------------|-----------|-------------------------|--------------------|-----------|
| 8.702-180.0 | 100381 | 1/4" FPT             | 1/4" FPT               | 3/8" FPT                  | Poly      | Teflon <sup>®</sup>     | 3.4 GPM            | N/A       |
| 8.702-181.0 | 100382 | 1/4" FPT             | 1/4" FPT               | 3/8" FPT                  | Kyn       | Teflon <sup>®</sup>     | 3 GPM              | N/A       |
| 8.702-200.0 | 100410 | 3/8" FPT             | 1/4" FPT               | 3/8" FPT                  | Poly      | Teflon <sup>®</sup>     | 6 GPM              | 1/32"     |
| 8.702-201.0 | 100411 | 3/8" FPT             | 1/4" FPT               | 3/8" FPT                  | Poly      | Santoprene <sup>®</sup> | 6 GPM              | 1/32"     |
| 8.702-182.0 | 100383 | 1/2" FPT             | 1/4" FPT               | 3/8" FPT                  | Poly      | Hytrel <sup>®</sup>     | 15 GPM             | 1/32"     |
| 8.702-183.0 | 100384 | 1/2" FPT             | 1/4" FPT               | 3/8" FPT                  | Poly      | Santoprene <sup>®</sup> | 15 GPM             | 1/32"     |
| 8.702-184.0 | 100385 | 1/2" FPT             | 1/4" FPT               | 3/8" FPT                  | Poly      | Teflon <sup>®</sup>     | 15 GPM             | 1/32"     |
| 8.702-187.0 | 100391 | 3/4" FPT             | 1/4" FPT               | 3/4" FPT                  | Poly      | Neoprene                | 27.3 GPM           | 1/16"     |
| 8.702-188.0 | 100392 | 3/4" FPT             | 1/4" FPT               | 3/4" FPT                  | Poly      | Buna-N                  | 27.3 GPM           | 1/16"     |
| 8.702-189.0 | 100393 | 3/4" FPT             | 1/4" FPT               | 3/4" FPT                  | Poly      | Hytrel <sup>®</sup>     | 27.3 GPM           | 1/16"     |
| 8.702-190.0 | 100394 | 3/4" FPT             | 1/4" FPT               | 3/4" FPT                  | Poly      | Teflon <sup>®</sup>     | 27.3 GPM           | 1/16"     |
| 8.702-191.0 | 100395 | 3/4" FPT             | 1/4" FPT               | 3/4" FPT                  | Alum      | Buna-N                  | 27.3 GPM           | 1/16"     |
| 8.702-192.0 | 100396 | 1" FPT               | 3/8" FPT*              | 3/4" FPT                  | Poly      | Neoprene                | 48.3 GPM           | 3/16"     |
| 8.702-193.0 | 100397 | 1" FPT               | 3/8" FPT*              | 3/4" FPT                  | Poly      | Hytrel <sup>®</sup>     | 48.3 GPM           | 3/16"     |
| 8.702-194.0 | 100398 | 1" FPT               | 3/8" FPT*              | 3/4" FPT                  | Poly      | Teflon <sup>®</sup>     | 48.3 GPM           | 3/16"     |
| 8.702-195.0 | 100399 | 1" FPT               | 3/8" FPT*              | 3/4" FPT                  | Alum      | Hytrel <sup>®</sup>     | 35.7 GPM           | 3/16"     |
| 8.702-202.0 | 100415 | 1-1/2" FPT           | 1/2" FPT*              | 3/4" FPT                  | Alum      | Buna-N                  | 116 GPM            | 9/32"     |

\*With air-cock instead of ball valve

## Diaphragm Kits for Yamada Pumps

To minimize downtime, Yamada pumps are designed for quick, trouble-free maintenance. Pump diaphragms, balls and seats can be replaced in 20 minutes or less and with little chance of leaks commonly associated with other diaphragm pumps.

- Kits include everything required for routine Maintenance



| Part No     | Old No | Kit                 | Pump Size | Yamada Pump No. |
|-------------|--------|---------------------|-----------|-----------------|
| 8.703-277.0 | 105004 | Teflon <sup>®</sup> | 1/4"      | 100381          |
| 8.703-278.0 | 105006 | Hytrel <sup>®</sup> | 1/2"      | 100383          |
| 8.703-279.0 | 105008 | Santoprene          | 1/2"      | 100384          |
| 8.703-281.0 | 105010 | Teflon <sup>®</sup> | 1/2"      | 100385          |
| 8.703-282.0 | 105012 | Neoprene            | 3/4"      | 100391          |
| 8.703-283.0 | 105014 | Buna                | 3/4"      | 100392          |

| Part No     | Old No | Kit                 | Pump Size | Yamada Pump No. |
|-------------|--------|---------------------|-----------|-----------------|
| 8.932-947.0 | 105018 | Teflon <sup>®</sup> | 3/4"      | 100394          |
| 8.703-284.0 | 105022 | Neoprene            | 1"        | 100396          |
| 8.703-285.0 | 105024 | Hytrel <sup>®</sup> | 1"        | 100397          |
| 8.703-286.0 | 105026 | Teflon <sup>®</sup> | 1"        | 100398          |
| 8.703-320.0 | 105150 | Buna                | 1-1/2"    | 100415          |

NOTE: Individual components (O-rings or diaphragms only, for example) also available.